



**0 Bed
Land - Building Plot
located in Wolverhampton**


REDSTONES
The Property Experts

**Gorse Road
Wednesfield
Wolverhampton
WV11 2PY**

*****LAND FOR SALE WITH PLANNING PERMISSION***** A fantastic development opportunity to purchase land previously used as garages on the popular Ashmore Park estate with planning permission for the erection of a pair of semi detached houses. For further details please contact Redstones or check with Wolverhampton Planning Department.

Note: Prospective buyers are advised to make their own enquiries with Wolverhampton Planning Department about any planning decision notice.



0



0



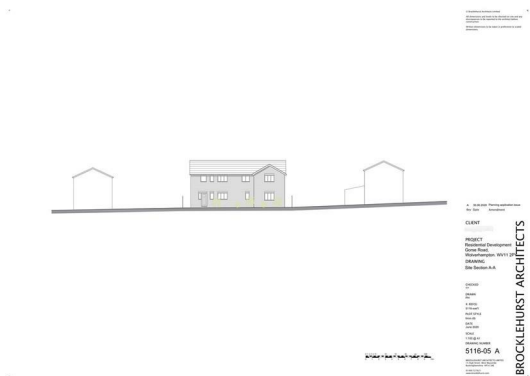
0




£140,000

*****LAND FOR SALE WITH PLANNING PERMISSION***** A fantastic development opportunity to purchase land previously used as garages on the popular Ashmore Park estate with planning permission for the erection of a pair of semi detached houses. For further details please contact Redstones or check with Wolverhampton Planning Department.

Note: Prospective buyers are advised to make their own enquiries with Wolverhampton Planning Department about any planning decision notice.



Energy Efficiency Rating		
	Current	Potential
<i>Very energy efficient - lower running costs</i>		
(92 plus) A		
(81-91) B		
(69-80) C		
(55-68) D		
(39-54) E		
(21-38) F		
(1-20) G		
<i>Not energy efficient - higher running costs</i>		
England & Wales	EU Directive 2002/91/EC	

DIRECTIONS

CONTACT

West Midlands House
Gypsy Lane
Willenhall
West Midlands
WV13 2HA

E: info@redstones.co.uk
T: 01922 235 350
<http://www.redstones.co.uk>

